

JK INSTITUTE OF TECHNOLOGY AND MANAGEMENT

JK INSTITUTE JK Institute of Technology and Management (JKITM), established to offer Vocational Education & Training in Technology & Management applications; aimed at serving as a “ Platform for youth development through Experiential Learning” to meet the growing corporate needs. To develop Knowledge workers and Leaders - who are versatile and analytical and who can be the driving force for innovation and growth. Institute is located in Navi Mumbai, the Millennium City, a rapidly growing education and economic hub of the country.

Institute offers Job oriented Diploma and Certificate Programs such as Diploma in Entrepreneurship Management, EDI (Govt. of India) and Certificate programs in Geographic Information Systems, Business Analytics, Project Management and Quality Management , which prepares the students to meet the corporate needs. Institute offers DEC approved Courses of Vinayaka Mission University as Study Centre ; Institute has been offering UGC recognised courses as Study Centre of Sikkim Manipal University ; a Outreach Centre of University of Mysore, a NAAC accredited A+ rated university. Optional full time autonomous Program in Management to prepare the students to meet the corporate needs.

JKITM assists all the students in placement in both national and international companies as the institute is associated with numerous corporations through its associated organizations. Students are prepared to succeed in the interviews.

Consultancy & Geospatial Software Solutions:

JKITM has significant experience in providing geospatial application software solutions to its clients worldwide. The capability to offer a combination of geospatial data and software services as a comprehensive solution to clients uniquely differentiates us in the market. Our geospatial platform independent approach allows us to use the best-of-breed technologies from ESRI, MapInfo, Autodesk, Oracle, Small world and Intergraph to develop successful client solutions.

A key differentiator is its expertise in process analysis, process design, and process automation, resulting in improved workflow management, cost effective, timely and highest quality deliverables. Our team members, for over two decades, have been delivering business solutions deploying the Information Technologies powered by Geospatial capabilities in diverse segments such as Utilities, e-government, Telecom, environment, urban planning, Agriculture, Forestry, Infrastructure, Insurance, Security and Health. JKITM offers following ICT / GIS Solutions and Services :

1. Requirement assessment, Decision Support Solution , Integration & Implementation
2. Enterprise geospatial solution development
3. Web mapping solutions development / customization
4. Project Management consultancy
5. Quality Audit and Process optimization
6. Human Resources Management
7. Business Analytics & Optimisation Solutions

Rotaract Club of JKITM : Registered with Rotary International under Dist. 3140 in 2006, is carrying out community service activities in and around Navi Mumbai. Students are exposed in community service, vocational services and their participation in such events help them to develop strong interactive, analytical, oratory skills. They are also motivated to conduct and organize events on their own. Students get the opportunities to conduct workshops related with personality development, inter college and inter club events and competitions and various leadership enhancement programmes which improve quality of life as well as personal and professional skills. Students also get exposure along with other professionals in Community services by way of Polio Immunization drives, Health Check-up camps, Rural projects etc which also helps them in their academic curriculum. Founders of the Institute are active Rotarians and committed to the Social Cause to help the needy. SERVICE TO HUMANITY IS SERVICE TO GOD.

For more information:
info@jk institute.com , www.jk institute.com



Certificate Course In Business Intelligence

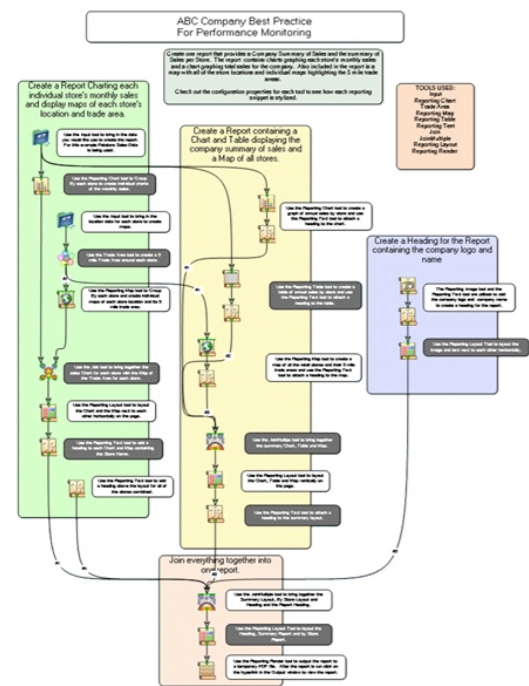


Business Intelligence

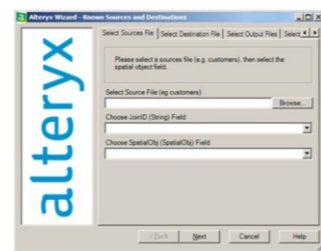
Business intelligence (BI) refers to skills, technologies, applications and practices used to help a business acquire a better understanding of its commercial context. Business intelligence may also refer to the collected information itself. BI technologies provide historical, current, and predictive views of business operations. Common functions of business intelligence technologies are reporting, analytics, data mining, business performance management, benchmarking, text mining, and predictive analytics. Business intelligence thus aims to support better business decision-making.

Geographic Business Intelligence®: From a BI perspective, bringing Geospatial reference brings context to the business information. So much effort is put into all sort of data manipulation in an objective to consider all aspects of the information to support better business decision-making, also benefiting from the Geographic dimension of the information in all the BI value chain is a natural way to succeed - **Business Intelligence powered by Geographic Intelligence**. Geographic Business Intelligence® cooperates with BI in order to make the Location Intelligence adoption pervasive thus can be called a **“Geographic Business Intelligent Solutions”**.

Best Practices Defined



Best Practices Deployed



Answers Delivered



BI COURSE

JKITM (JK Institute of Technology and Management) offers a hands on training on Business Intelligence theory as well as practical under the experienced professors and trainers. Lectures, lab practices, assignments, projects are the different components of the course.

The course provides insight into integration of BI capabilities in various stages of business process to enhance decision making.

The course helps in understanding how BI platform can be used for performance management.

The course through case studies and illustrations, helps in understanding how to develop optimal process for business aimed at productivity enhancement.

Certificate of the candidate will be issued by JK Institute of Technology and Management.

Course calendar:

Batch No.	From	To
I	28 May 2012	28 June 2012
II	2 July 2012	2 August 2012
III	6 August 2012	6 September 2012
IV	10 September 2012	10 October 2012
V	15 October 2012	15 November 2012
VI	19 November 2012	19 December 2012

Course Structure:

Morning Batch: 9.30 - 12.30

Evening Batch: 2.30 - 5.30

SR. NO.	COURSE COMPONENT	RECOMMENDED FOR	DURATION	COURSE FEES (INR)
BI-01	Introduction to BI	Fresh Graduates	1 Month	60,000
BI-02	Introduction to BI	Experienced Graduates / Professionals	1 Week	30,000
BI-03	Business Analytics & Reporting	Experienced Graduates / Professionals	1 week	30,000

Weekly assignments, Individual and group projects.

* Admissions are open.



Technology

New Technology called Alteryx enables you to define and deploy flexible and repeated workflow processes based on your companies optimised best practices.

Drag and drop approach of alteryx workflow gives analysts with no previous programming or database development results in quickly developed sophisticated solutions.

A single technology contains different tools set, macros and wizards to produce more valuable Business Intelligence solution.

Alteryx technology also offers spatial analysis, ETL, Data quality management, BI Analytics, Reporting and visualisation and customer data integration.